



ZHM

Hammer Mill

- Suitable for highly contaminated or abrasive materials
- Fixed hammer style
- Heavy-duty construction
- High throughput rates
- Effective disintegration of mixed input materials

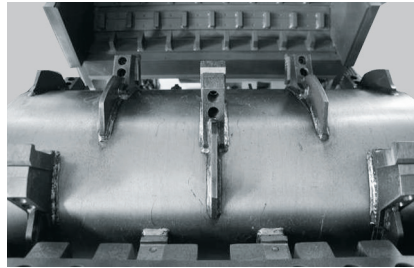


Hammer Tools

The individual hammer tools used in the ZHM are manufactured from highly wear-resistant steel. This increases tool life under demanding operating conditions and allows quick replacement when required.

Applications

The ZHM hammer mill is designed for materials with high levels of contamination and abrasive content. Typical applications include electronic waste, scrap metals and other mixed input materials where effective disintegration is required before downstream separation. The machine is particularly suitable where robust operation and wear resistance are essential.



Rotor Design

The ZHM hammer mill features a fixed hammer rotor with individually mounted tools. Its heavy-duty rotor design ensures smooth operation even with difficult and abrasive materials.

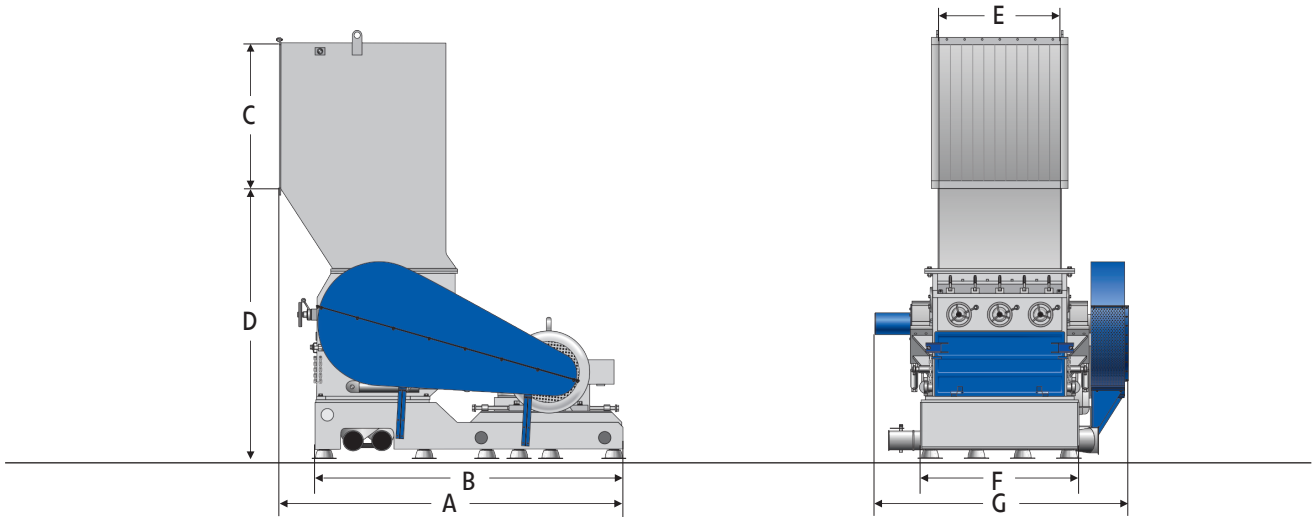
General Description

The ZHM series consists of heavy-duty hammer mills with rotor widths from 800 to 1200 mm and rotor diameters from 600 to 800 mm. The fixed hammer rotor is designed to generate high impact forces for demanding applications involving contaminated or abrasive materials. The robust machine construction, combined with replaceable wear parts and easy tool access, supports reliable operation and simple maintenance. A range of screen sizes allows the machine to be adapted to different applications and required output sizes.



Disintegration

The combination of pre-breakers and counter knives creates a strong impact effect, resulting in efficient disintegration and high throughput.



Technical Specifications

| Type | 600/800 | 800/1200 |
|----------------------------------|-----------|------------|
| Rotor diameter (mm) | 600 | 800 |
| Rotor width (mm) | 800 | 1200 |
| Drive capacity (kW) | 75 | 132 |
| Rotor tools (rows) | 18 | 18 |
| Stator blades (rows) | 2 | 2 |
| Screen size (mm) | > 6 | > 8 |
| Effective working area (mm x mm) | 788 x 555 | 1150 x 740 |
| Weight (approx. kg) | 4500 | 8200 |

Dimensions

| Type | 600/800 | 800/1200 |
|--------|---------|----------|
| A (mm) | 2350 | 3025 |
| B (mm) | 2100 | 2800 |
| C (mm) | 1000 | 1200 |
| D (mm) | 1940 | 2570 |
| E (mm) | 788 | 1140 |
| F (mm) | 1125 | 1535 |
| G (mm) | 1840 | 2430 |

ZERMA MACHINERY & RECYCLING TECHNOLOGY CO. LTD.

5 Xinjie Rd Xinqiao · Township Ind. Park
 Songjiang · Shanghai · China
 Phone: +86 21 57645573 · info@zerma.com

